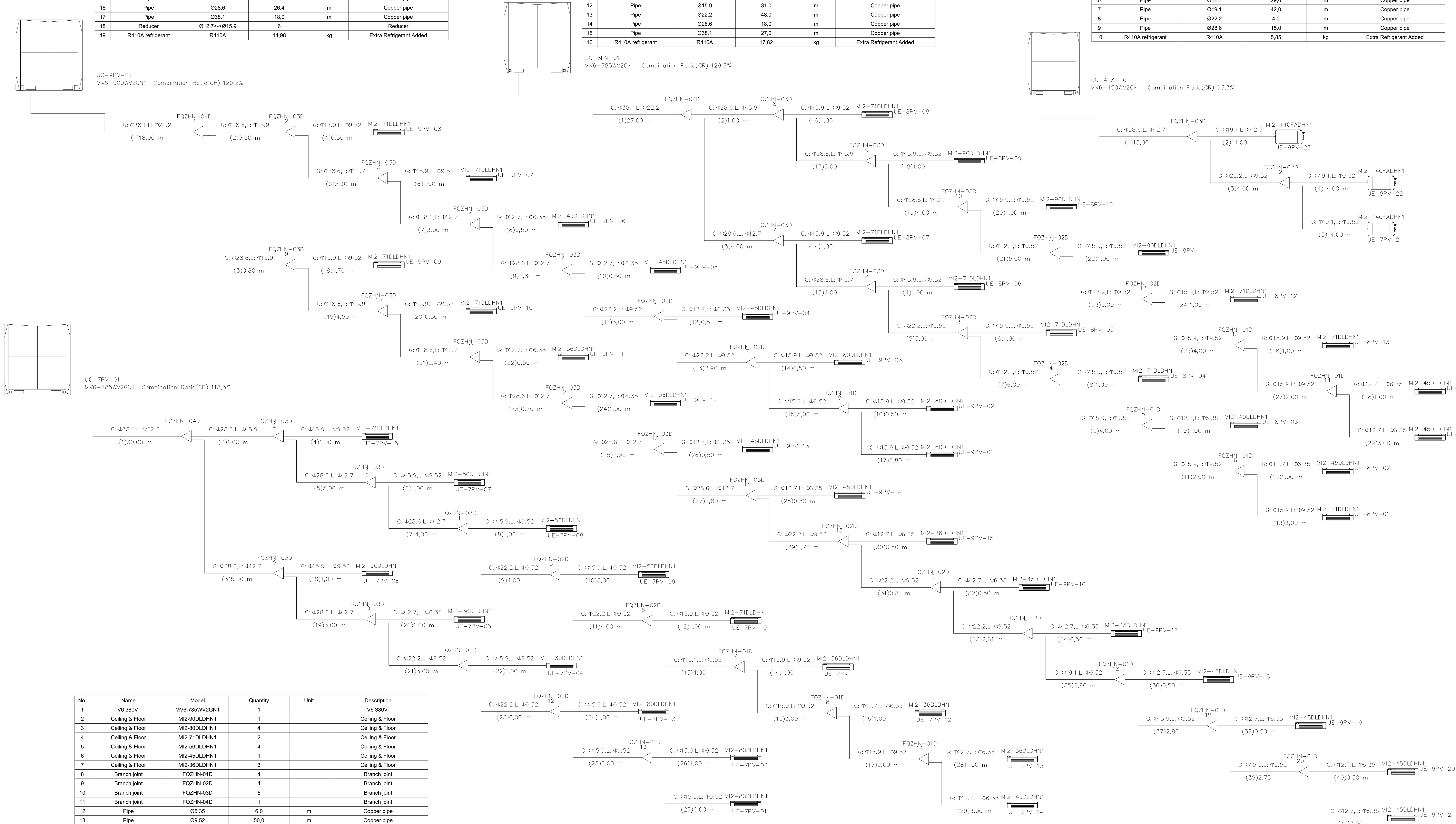


No.	Name	Model	Quantity	Unit	Description
1	V6 380V	MV6-900WV2GN1	1		V6 380V
2	Ceiling & Floor	M12-80DLHN1	3		Ceiling & Floor
3	Ceiling & Floor	M12-71DLHN1	4		Ceiling & Floor
4	Ceiling & Floor	M12-45DLHN1	11		Ceiling & Floor
5	Ceiling & Floor	M12-36DLHN1	3		Ceiling & Floor
6	Branch joint	FQZHN-01D	4		Branch joint
7	Branch joint	FQZHN-02D	5		Branch joint
8	Branch joint	FQZHN-03D	10		Branch joint
9	Branch joint	FQZHN-04D	1		Branch joint
10	Pipe	Ø6.35	10.5	m	Copper pipe
11	Pipe	Ø9.52	35.0	m	Copper pipe
12	Pipe	Ø12.7	28.4	m	Copper pipe
13	Pipe	Ø15.9	29.6	m	Copper pipe
14	Pipe	Ø19.1	2.9	m	Copper pipe
15	Pipe	Ø22.2	29.0	m	Copper pipe
16	Pipe	Ø28.6	26.4	m	Copper pipe
17	Pipe	Ø38.1	18.0	m	Copper pipe
18	Reducer	Ø12.7<->Ø15.9	6		Reducer
19	R410A refrigerant	R410A	14.98	kg	Extra Refrigerant Added

No.	Name	Model	Quantity	Unit	Description
1	V6 380V	MV6-785WV2GN1	1		V6 380V
2	Ceiling & Floor	M12-90DLHN1	3		Ceiling & Floor
3	Ceiling & Floor	M12-71DLHN1	8		Ceiling & Floor
4	Ceiling & Floor	M12-45DLHN1	4		Ceiling & Floor
5	Branch joint	FQZHN-01D	4		Branch joint
6	Branch joint	FQZHN-02D	4		Branch joint
7	Branch joint	FQZHN-03D	5		Branch joint
8	Branch joint	FQZHN-04D	1		Branch joint
9	Pipe	Ø6.35	6.0	m	Copper pipe
10	Pipe	Ø9.52	46.0	m	Copper pipe
11	Pipe	Ø12.7	18.0	m	Copper pipe
12	Pipe	Ø15.9	31.0	m	Copper pipe
13	Pipe	Ø22.2	48.0	m	Copper pipe
14	Pipe	Ø28.6	18.0	m	Copper pipe
15	Pipe	Ø38.1	27.0	m	Copper pipe
16	R410A refrigerant	R410A	17.82	kg	Extra Refrigerant Added

No.	Name	Model	Quantity	Unit	Description
1	V6 380V	MV6-450WV2GN1	1		V6 380V
2	100% Fresh Air	M12-140FADHN1	3		100% Fresh Air
3	Branch joint	FQZHN-02D	1		Branch joint
4	Branch joint	FQZHN-03D	1		Branch joint
5	Pipe	Ø9.52	32.0	m	Copper pipe
6	Pipe	Ø12.7	29.0	m	Copper pipe
7	Pipe	Ø19.1	42.0	m	Copper pipe
8	Pipe	Ø22.2	4.0	m	Copper pipe
9	Pipe	Ø28.6	15.0	m	Copper pipe
10	R410A refrigerant	R410A	5.85	kg	Extra Refrigerant Added



No.	Name	Model	Quantity	Unit	Description
1	V6 380V	MV6-785WV2GN1	1		V6 380V
2	Ceiling & Floor	M12-90DLHN1	1		Ceiling & Floor
3	Ceiling & Floor	M12-80DLHN1	4		Ceiling & Floor
4	Ceiling & Floor	M12-71DLHN1	2		Ceiling & Floor
5	Ceiling & Floor	M12-56DLHN1	4		Ceiling & Floor
6	Ceiling & Floor	M12-45DLHN1	1		Ceiling & Floor
7	Ceiling & Floor	M12-36DLHN1	3		Ceiling & Floor
8	Branch joint	FQZHN-01D	4		Branch joint
9	Branch joint	FQZHN-02D	4		Branch joint
10	Branch joint	FQZHN-03D	5		Branch joint
11	Branch joint	FQZHN-04D	1		Branch joint
12	Pipe	Ø6.35	6.0	m	Copper pipe
13	Pipe	Ø9.52	50.0	m	Copper pipe
14	Pipe	Ø12.7	23.0	m	Copper pipe
15	Pipe	Ø15.9	30.0	m	Copper pipe
16	Pipe	Ø19.1	4.0	m	Copper pipe
17	Pipe	Ø22.2	47.0	m	Copper pipe
18	Pipe	Ø28.6	18.0	m	Copper pipe
19	Pipe	Ø38.1	30.0	m	Copper pipe
20	Reducer	Ø12.7<->Ø15.9	1		Reducer
21	R410A refrigerant	R410A	18.91	kg	Extra Refrigerant Added

—M1M2 or PQ(ODU and ODU communication wire,0.75mm2 two-core cable should be used;PQ:0.75 mm2 two-core shielded cable should be used)
—D1D2(Group control communication wire,0.75mm2 two-core shielded cable should be used)
—ABQ3(C infrared commut four-core shielded four-core shielded cable should be used)
—X1X2 (Power line communication wire,0.75mm2 two-core shielded cable should be used)
—D1D2+X1X2(Group control communication and power wire,0.75mm2 two-core shielded cable+0.75mm2 two-core shielded cable should be used)
—XYE (ODU and ODU communication wire, 0.75mm2 three-core shielded cable should be used)
—Power wire

The drawing may differ from actual conditions due to limitations of the software.Please confirm before installation according to the installation manual.

DO	EMISSÃO INICIAL (PROJETO EXECUTIVO)	05/03/24	R.I.A.
REV	MODIFICAÇÃO	DATA	APROVADO

TEKNIKA PROJETOS E CONSULTORIA LTDA.
R. BARÃO DO BANAVAL, 300 tel: (011) 3672-1657 / fax: (011) 3672-3701 / e-mail: teknika@bol.com.br

cliente: **SENAC**

projeto: **SENAC SEDE - CONSOLAÇÃO**

titulo: **SISTEMA DE AR CONDICIONADO**

fluxograma de redes frigorificas

escala:	data:	projeto:	desenho:	folha do projeto:
S/E5C	05/03/24	F.G.C.	P.G.C.	PROJETO EXECUTIVO

ENGENHEIRO RESPONSÁVEL: **RAUL JOSÉ DE ALMEIDA** CREA: **154.608-D/SP**

numeração: **1799-AC-PB-005-FLU-R00**